

1-24-08

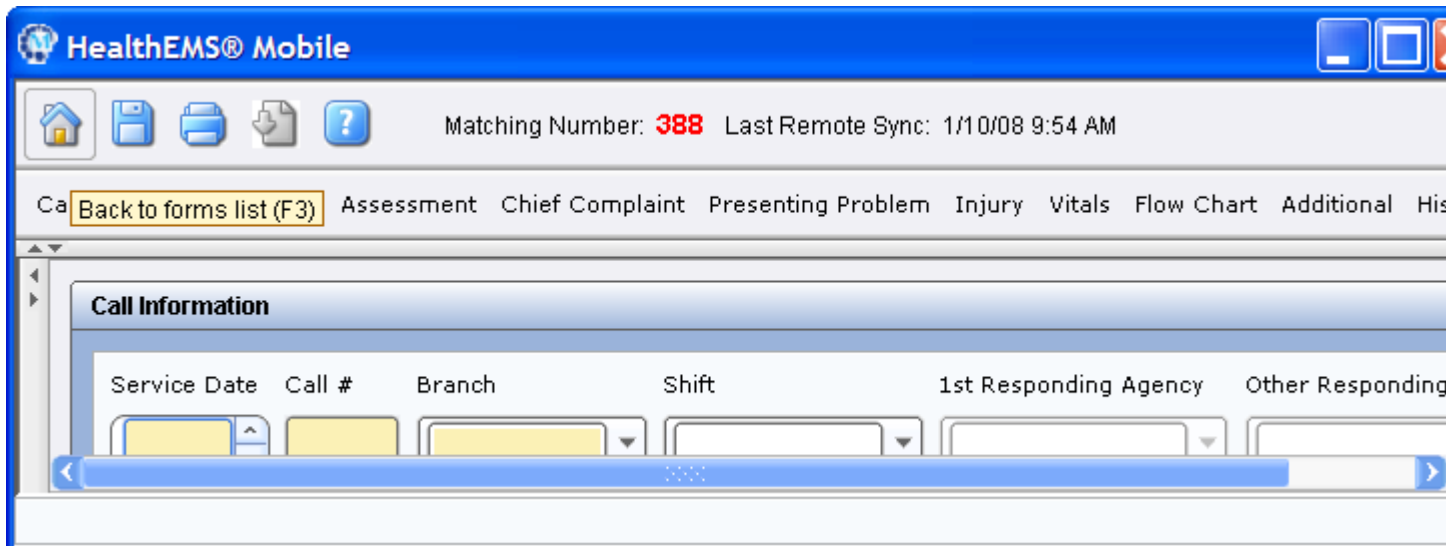
Re: Pulling your chart off the Toughbook and onto the base computer.

If your chart is not sync'd on the Toughbook, and you try to pull it onto a different computer, you will lose all your data. Remember to **ONLY** pull your saved charts from the **TOP HALF** of the home page—not the bottom half, since what you do in that case is simply generate a new record. Here's how to ensure that that happens.

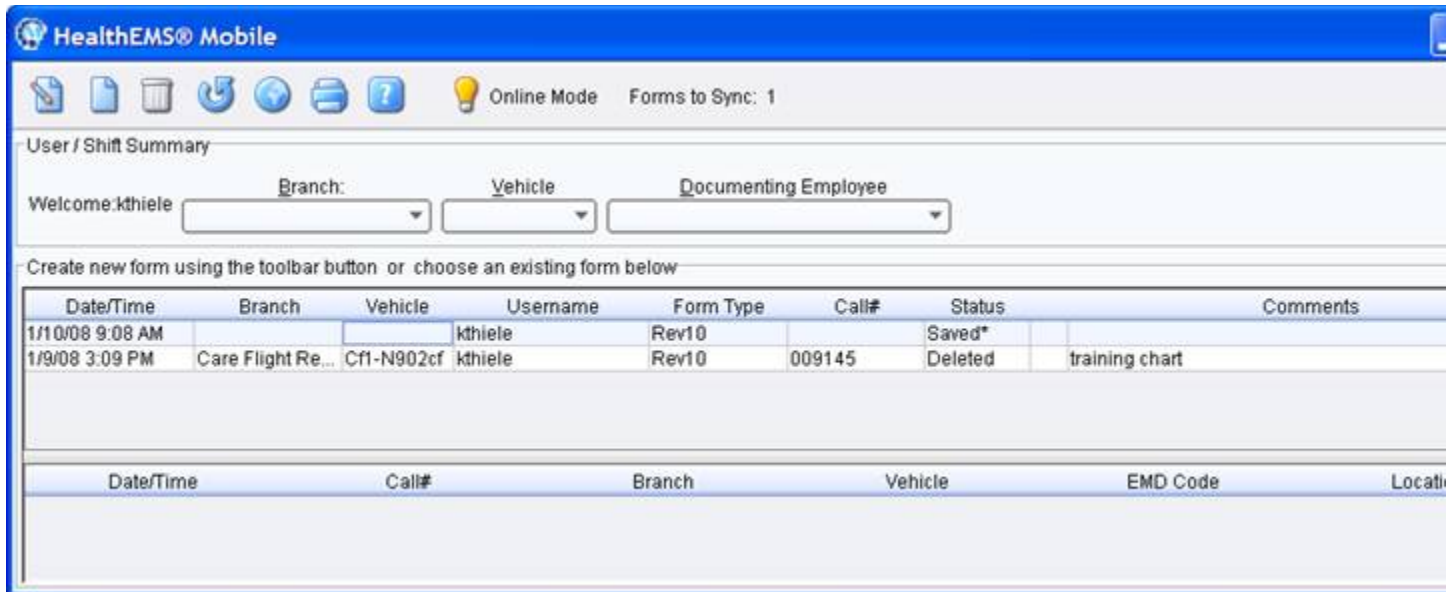
To pull your chart over to a different computer, follow this step by step procedure:

When you are in your chart on your toughbook, you **MUST** save and sync your chart on the toughbook, and close down Mobile on the toughbook, **BEFORE** you do anything on a different computer.

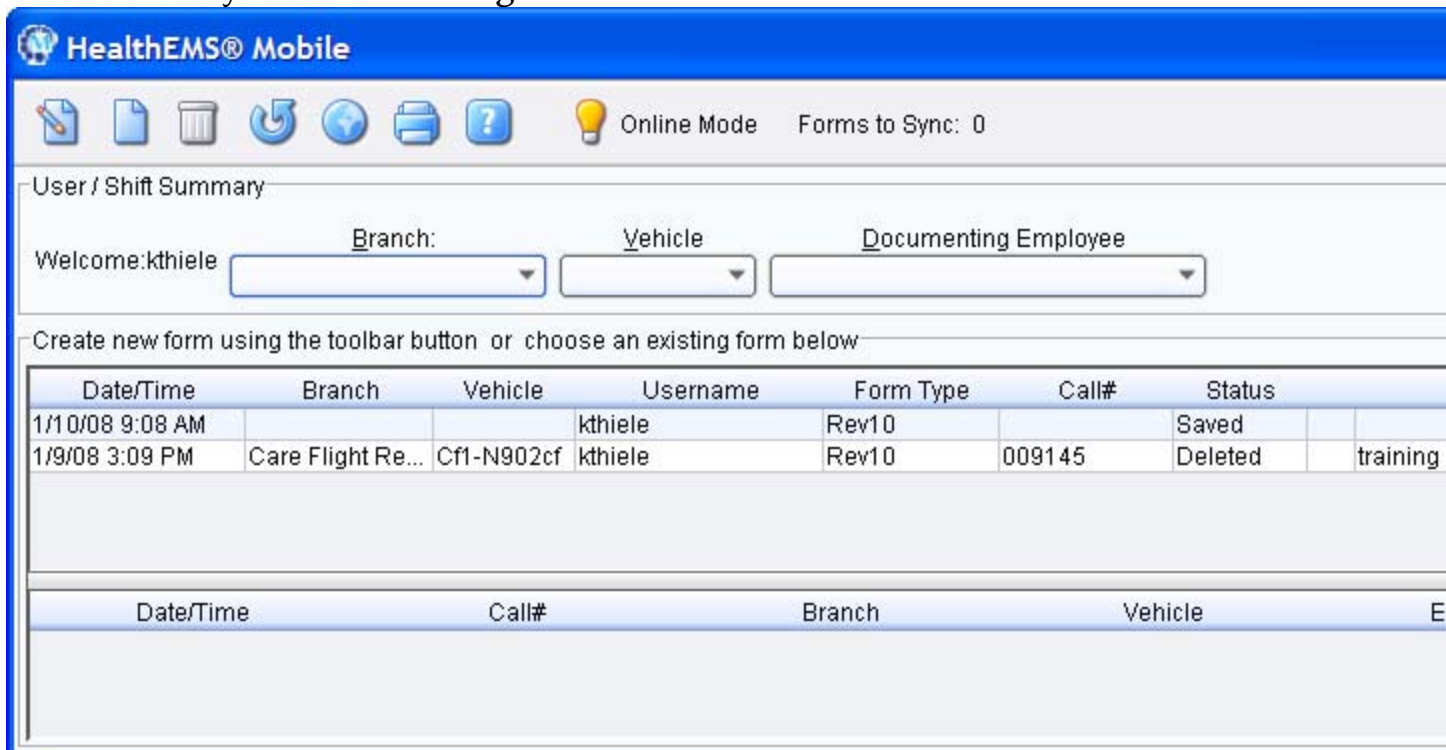
1. **In your chart: Save and sync. Always** use the **HOME** icon to save. Don't use the floppy disk icon. All that does is save your chart to the toughbook; it doesn't sync it. See below:



2. Note that the Status says **Saved*** and you get the message **Forms to Sync: 1**. See below:



- As soon as the asterisk disappears from the word **Saved** and it says **Forms to Sync: 0**, (see below), **THEN** you can hit the big red X on Mobile and close it down.



- NOW you can go to the new computer. Open up Mobile on the new computer.
- Sign in and get to the home page.

6. Once on the home page, leave Branch, Vehicle, and Documenter **BLANK**. Hit the “world” icon and your chart will show up on the TOP half of the screen. Double click on it, choose “Open for Editing”, and you can continue to edit your chart.