

11-28-07

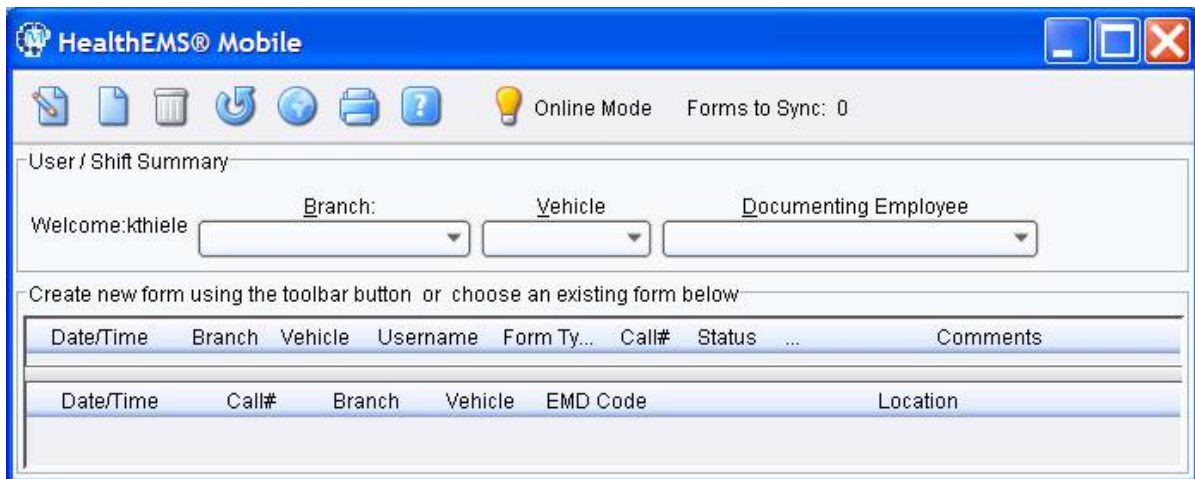
Re: How to use the “Global” view to pull up your charts

When you are trying to pull your chart over onto the base computer from the toughbook, do the following:

Step 1. On the toughbook, ensure that you have saved your chart. Hit the big red X on Mobile, and this will also sync your chart. Once Mobile is closed down on the toughbook, go to step 2.

Step 2. Go to the base computer. Double click on the Mobile icon.

You’ll get to the “home” page:



Where it says Branch, Vehicle and Documenting Employee, leave those BLANK.

Step 3. Hit the “World” icon. Your call(s) will now appear on the home page on the top half of the screen.